



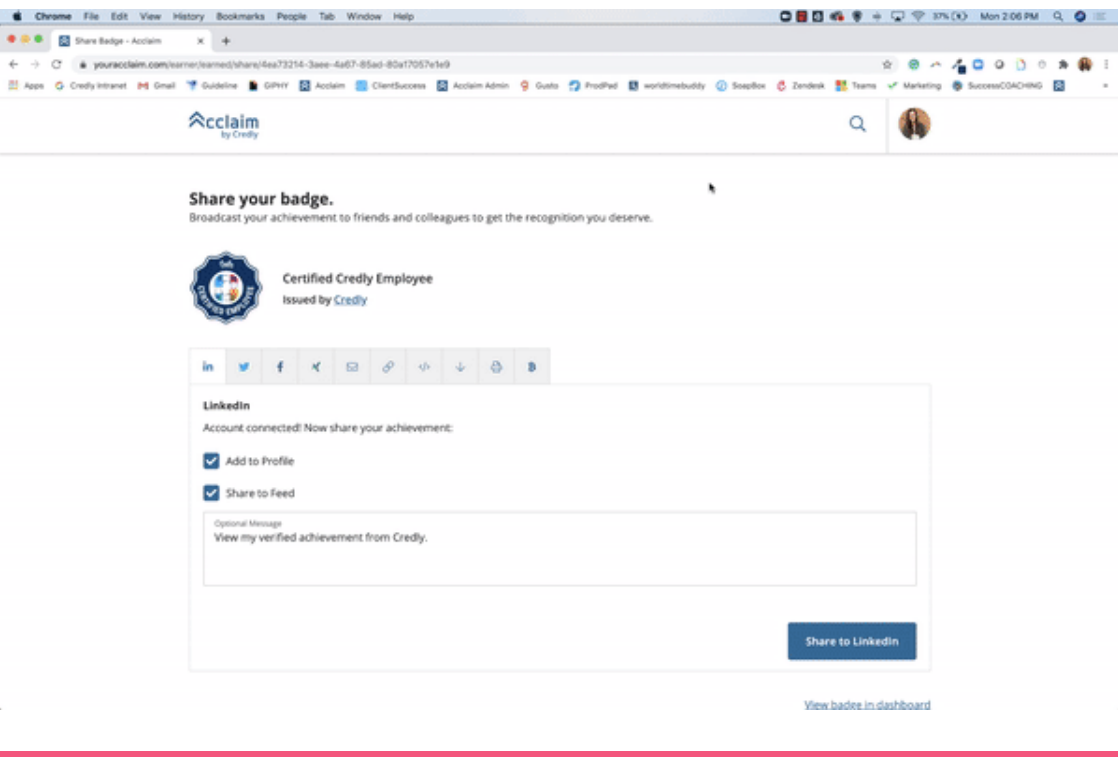
Hello Credly member,

It's August!

We're in the home stretch of summer here in the United States, which is hard to believe. Wherever you are in the world, we hope you've been able to enjoy some of your hobbies or time with family over the past month. Here at Credly, we've mixed summer fun with a lot of new, exciting things to share. On to the updates!

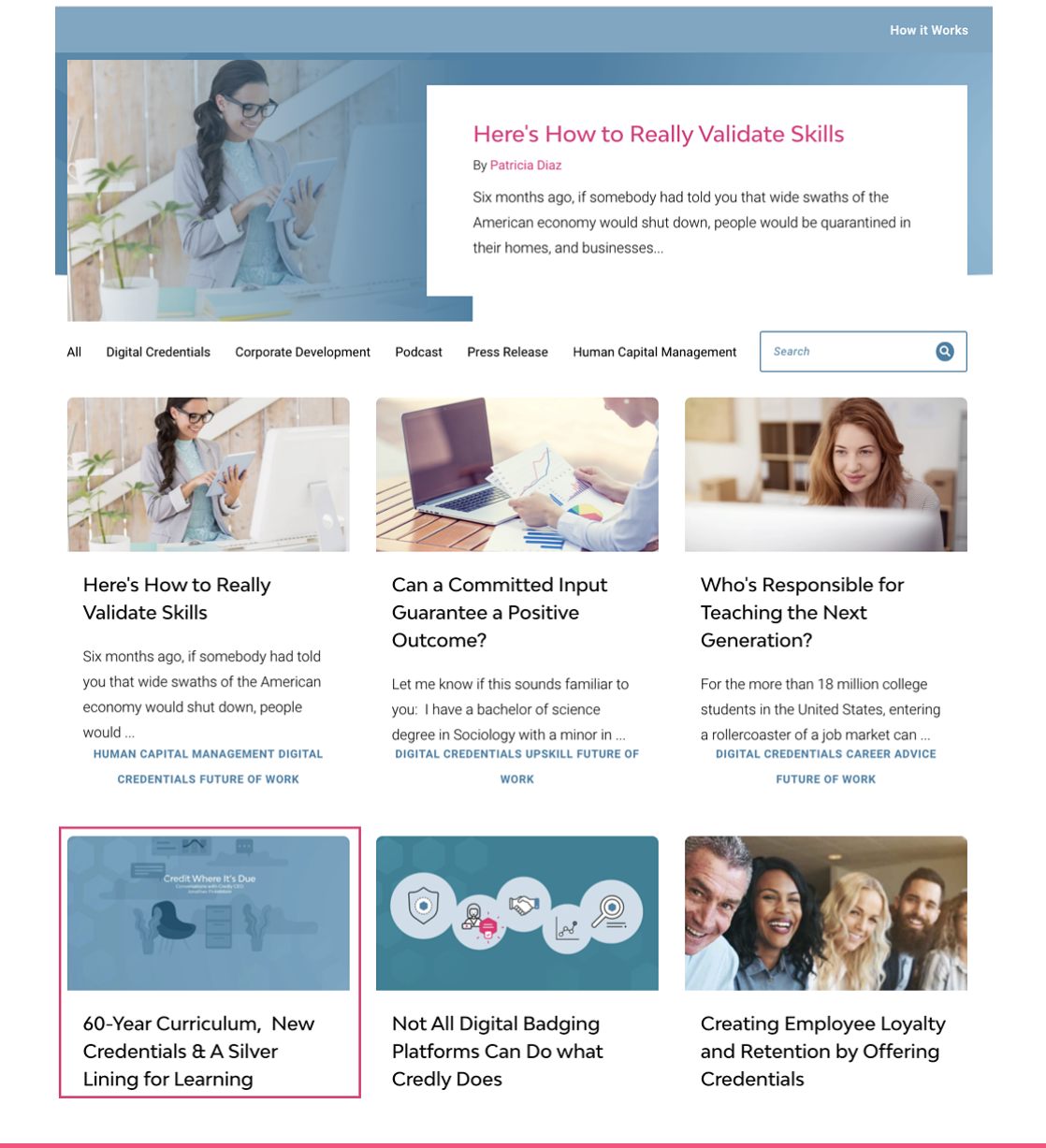
LinkedIn sharing

Our process for sharing to LinkedIn recently changed and now it's easier than ever! Earners no longer need to copy and paste fields since the form is automatically filled in now.



Conversations with Jonathan

Credly CEO, Jonathan Finkelstein, hosts a series of conversations with people advancing change that leads to a better and more equitable future of work. The series is called, "Credit Where It's Due," and guests include change-makers, problem-solvers, and leaders who are bringing big ideas and doing the hard work. Watch [the latest episode](#) with Christopher Dede, Ed.D., Timothy E. Wirth Professor in Learning Technologies, Technology, Innovation, and Education Program at the Harvard Graduate School of Education.



We like helping friends!

Dr. Terry McGovern, a management professor with the University of South Florida, is conducting research on starting a digital badge program. If you have 6 months of experience with issuing digital badges, have created at least 10 badges, and issued at least 50 badges please consider completing his 16 question survey which should take no longer than 5-7 minutes. The survey will remain open through the 13th of August.

Survey link: https://usf.az1.qualtrics.com/jfe/form/SV_6QJ44FYfwuWk5v

Request for Interviews

Are you interested in seeing what credentials your employees have? Does it solve a pressing business need? If so, our Product Team would love to chat with you about it! [You can grab a time slot here](#). No need to prepare anything - just show up and share what you would do with credential data for your employees.

Cheers,

Credly Customer Success Team